

TECHNICAL DATA SHEET - KONUS (CONE)

DESCRIPTION

Cone in polyoletin for formwork.
Placed at the end of plastic distance tubes.

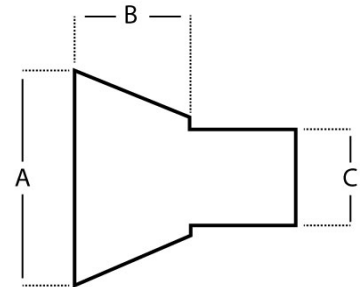
INSTALLATION

- A) First, the length of the distance tube is determined based on the thickness of the wall
Here you deduct what the cone and Vand-Con Cap adds.
30 mm (2 x concrete cover of 15 mm for Vand-Con Cap, 15 mm each)
After that, you deduct what the cone adds.
- B) Place the two Vand-Con Cap in each end of the tube and after that the cone.
- C) Secure and close the complete formwork and start casting.
- D) After hardening of the concrete the cone must be removed.
- E) Now insert the Vand-con Plug where the cone has been,
- F) Finally it is recommended to wash the hole with e.g. Redisit and then seal it with Redirep 45 or similar.



TYPES

Item no.	Description	A	B	C
1051030	Konus SK 22/10	43 mm	10 mm	22 mm
1051035	Konus SK 22/20	43 mm	20 mm	22 mm
1051040	Konus SK 22/30	45 mm	30 mm	22 mm
1051045	Konus SK 22/50	47 mm	50 mm	22 mm
1051050	Konus SK 32/10	52 mm	10 mm	32 mm



1. Vand-Con Prop (plug)
2. Vand-Con Kappe (cap)
3. Plastafstandsør (distance tube)
4. Vand-Con Kappe (cap)
5. Konus (Cone)



STORAGE

No specific requirement

SAFETY DATA SHEET

A safety data sheet is not required for this product.

CE MARKING

Konus is not subject to a harmonized standard and must therefore not be CEmarked according to the Construction Product Regulation no. 305/2011.

Note: We reserve the right to make printing errors. The current version of data is always available at www.haucon.dk or can be requested by contacting our internal sales department. The current revision number is in the top left corner

HauCon A/S | Tel. +45 86 22 93 93 | Mail: info@haucon.dk - www.haucon.dk